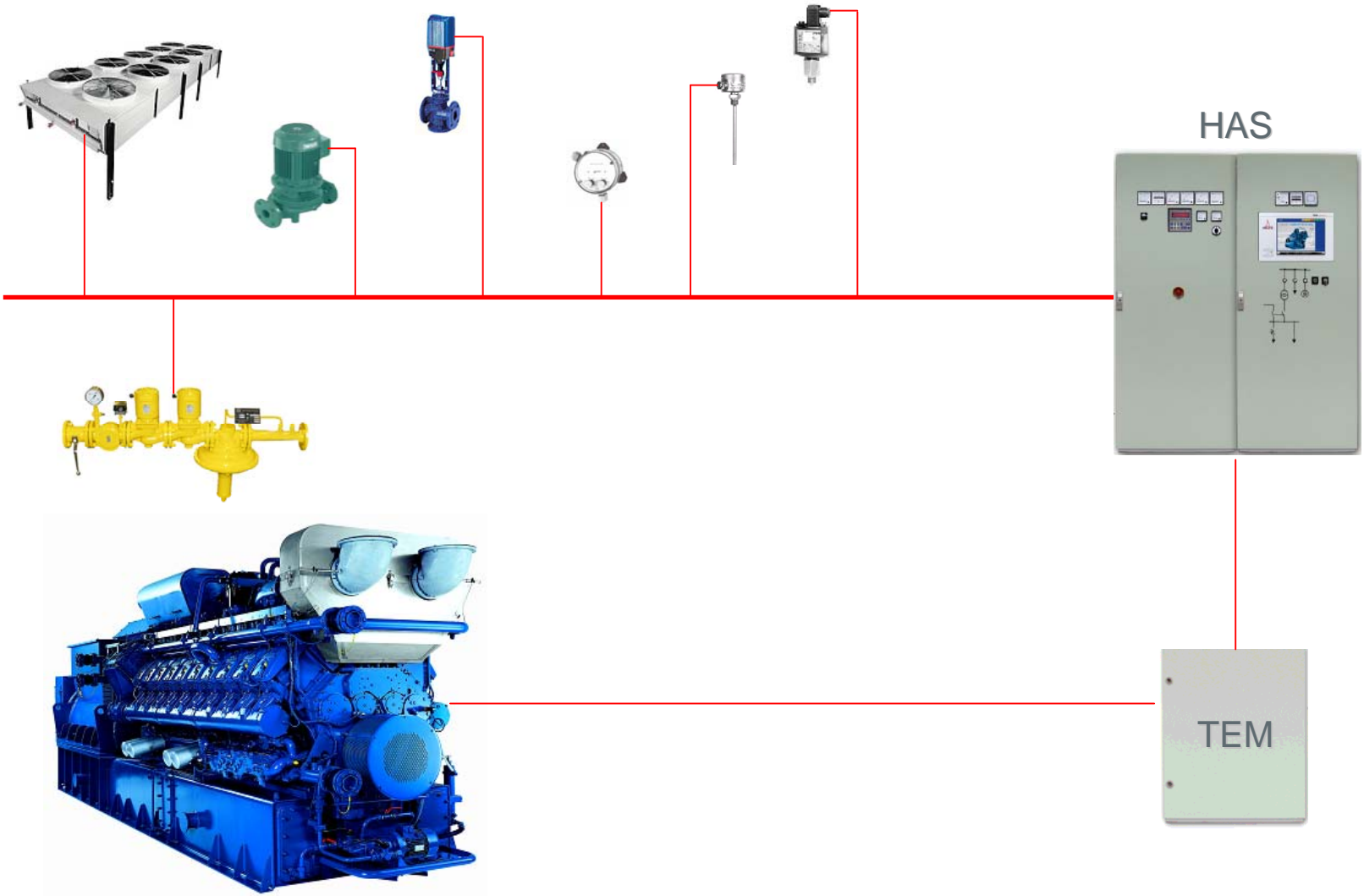


Switchgear

■ Overview

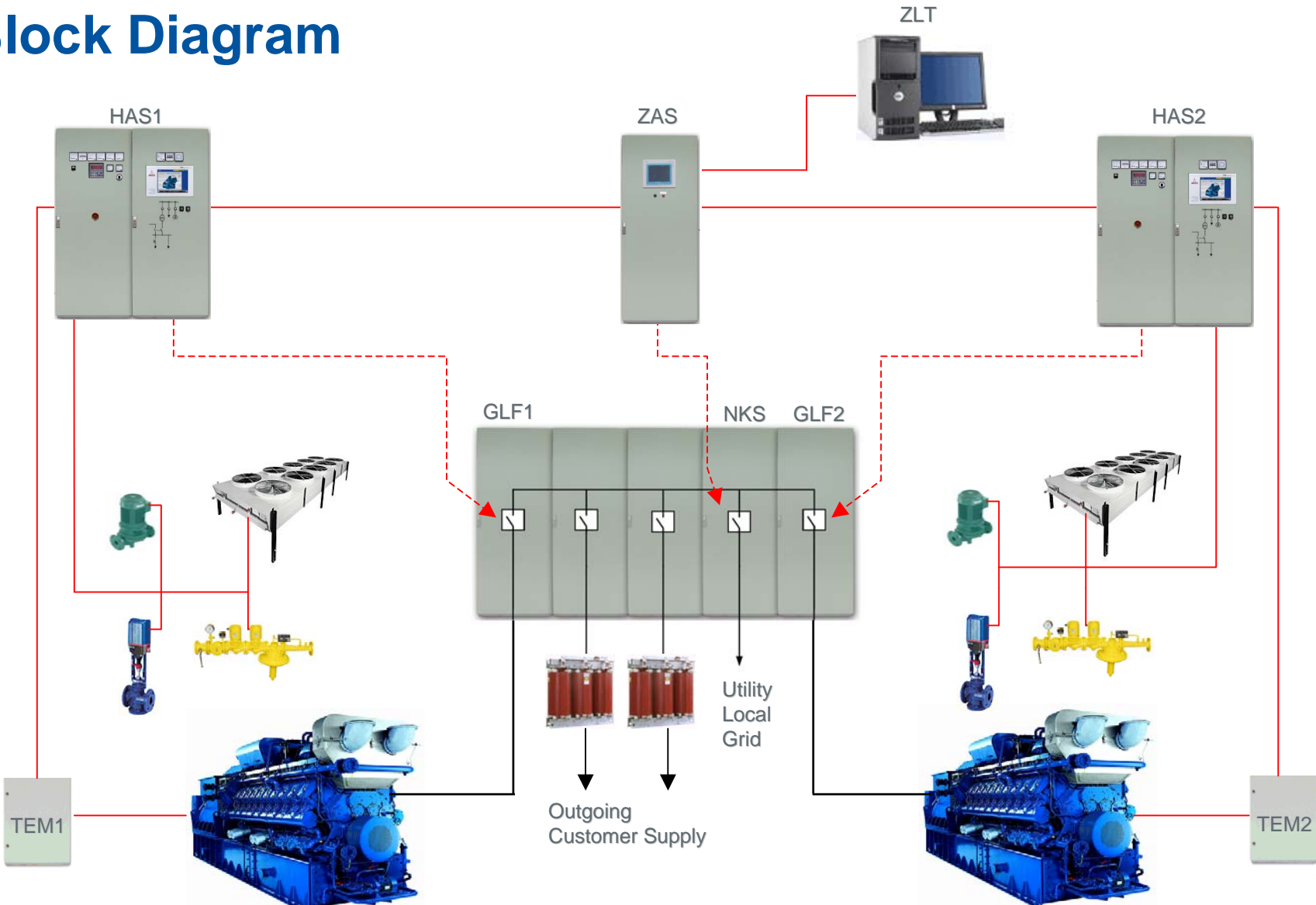


Overview



TEM: Total Electronic Management
HAS: Auxiliary Panel

Block Diagram



TEM: Total Electronic Management ZAS: Common Control Panel
 HAS: Auxiliary Panel NKS: Grid Circuit Breaker Panel
 GLF: Generator Circuit Breaker Panel ZLT: Customer Control System

Thank You

■ Contact:

VT-S

Electrical support, switchgear and
alternator

Tel +49 (0)621 384 8424

Fax +49 (0)621 384 3076

E-Mail stefan.herr@mwm.net